

Spot Lights

LV series

Refer to our website for product details.

CCS LV

Search



You can also use
your smartphone
or cell phone.

For quick access.

Provides spot lighting using original converging technology



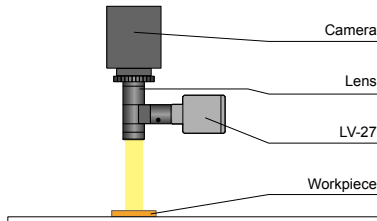
Applications

As a light source for a telecentric lens, light source for inspecting alignment of LCDs or circuit boards, light source for dimension measuring, light source for spot illumination, etc.

Features

Spot Light with tip radius of $\varnothing 8$ mm and emitting surface of $\varnothing 6$ mm.
Can be used embedded into the coaxial illuminating section of a telecentric lens or macro lens.

Example configuration (LV-27)



Lightweight, compact design

With its lightweight and compact design, it doesn't take up much room and is perfect for saving space.

Spot Light with low power consumption

The LV series consumes 0.8 W (for red) of power, and can be used for saving energy.

We accept custom orders.
Please feel free to inquire.

- Shape modifications
- Brightness increases
- Changes in wavelength, etc.

Lineup

Model name	LED color	Power consumption	Peak wavelength/ correlated color temperature	Options	Extension cables	Recommended Control Units	Weight
LV-27RD2	Red	24 V / 0.8 W	630 nm	-	FCB ^{*2} Straight Cable FCB-W 2-branch Cable FCB-F 4-branch Cable FRCB Robot Cable	PD3 CC-ST-1024 PSB POD ^{*1}	40 g
LV-27SW2	White	24 V / 0.4 W	5,500 K				
LV-27BL2	Blue	24 V / 0.4 W	470 nm				
LV-27GR2	Green	24 V / 0.6 W	525 nm				

LED Properties: Spectral Distribution ▶ P.290

Extension Cables ▶ P.280

Control Unit Selection Guide ▶ P.229

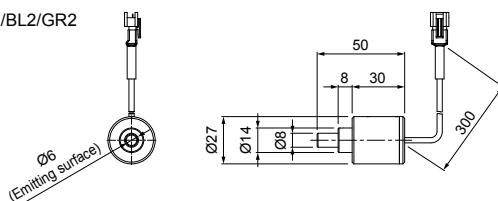
List of Control Unit Specifications ▶ P.231

^{*1} For information on the combination of Light Units and POD-series Control Unit, please refer to our website. <http://www.ccs-grp.com/lnk/qr/pod>

^{*2} The cables with a model name that ends with "-ME7" or "-EL2" are not included.

Dimensions (mm)

LV-27RD2/SW2/BL2/GR2



You can change the connectors of the Light Unit cable.
Choose between M12 connectors and flying leads.
Refer to P.5 for details.

Note

- Use as a Spot Light for directly illuminating the workpiece.
- In addition to Light Units with a tip radius of $\varnothing 8$ mm, we also offer $\varnothing 10$ mm and $\varnothing 12$ mm as custom orders.

Various technical
documents available.

PDF
Drawings

DXF
Drawings

3D CAD

Instruction
Guides

Product Filers

Imaging
Samples

Data Sheets

Examples of
Custom Ordered
Products

Download here.
<http://www.ccs-grp.com/dl/>