

Dome Lights LDM2 series

Refer to our website for product details.

CCS LDM2

Search



You can also use your smartphone or cell phone.

For quick access.

Provides diffused light from a cone-shaped emitting surface



LDM2-50RD2



LDM2-50SW2



LDM2-90BL2



LDM2-90GR2

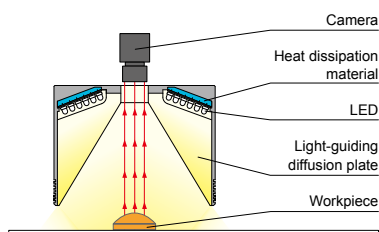
Applications

Inspection for the visual/text/color determination on glossy surfaces, curved surfaces, or uneven surfaces; soldering inspection; surface inspection for metal parts; text inspection for can bottoms; character recognition for glossy workpieces; etc.

Features

Light illuminated from the LEDs is transmitted through the light-guiding diffusion plate, and diffused light is illuminated evenly from a wide emitting surface to surround the whole workpiece.

Example configuration (LDM2-90)



We accept custom orders.
Please feel free to inquire.

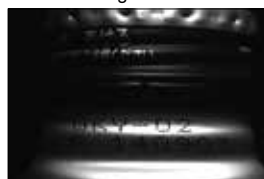
- Shape modifications
- Brightness increases
- Changes in wavelength, etc.

Imaging example: Imaging of text on an aluminum bottle can



Workpiece: Aluminum bottle can

LED Bar Light



It is difficult to form an image of the text due to the influence of uneven illumination.

LDM2-90RD2



It is possible to illuminate the whole thing evenly to form an image of the text.

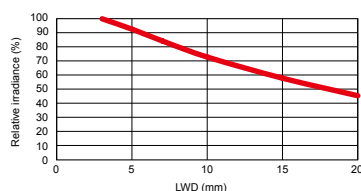
Data: Relative irradiance graph and uniformity (Representative example)

The data included is for reference only. Actual values may vary.

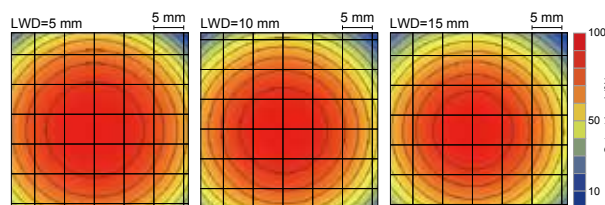
LDM2-50RD2

Relative irradiance graph^{*1}
(LWD Characteristics)^{*2}

*1: Irradiance on the optical axis
*2: Illuminating distance from the Light Unit to the workpiece



Uniformity (Relative irradiance)



Lineup

Model name	LED color	Power consumption	Peak wavelength/ correlated color temperature	Options	Extension cables	Recommended Control Units	Weight
LDM2-50RD2	Red	24 V / 3.6 W	630 nm	-	<div>FCB*2 Straight Cable</div> <div>FCB-W 2-branch Cable</div> <div>FCB-F 4-branch Cable</div> <div>FRCB Robot Cable</div>	<div>PD3</div> <div>CC-ST-1024</div> <div>PSB</div> <div>POD*1</div>	100 g
LDM2-50SW2	White	24 V / 5.0 W	5,500 K				
LDM2-50BL2	Blue		470 nm				
LDM2-50GR2	Green		525 nm				
LDM2-90RD2	Red	24 V / 14 W	630 nm			<div>PD3</div> <div>PSB</div> <div>POD*1</div>	500 g
LDM2-90SW2	White	24 V / 18 W	5,500 K				
LDM2-90BL2	Blue		470 nm				
LDM2-90GR2	Green		525 nm				

Extension Cables ► P.280

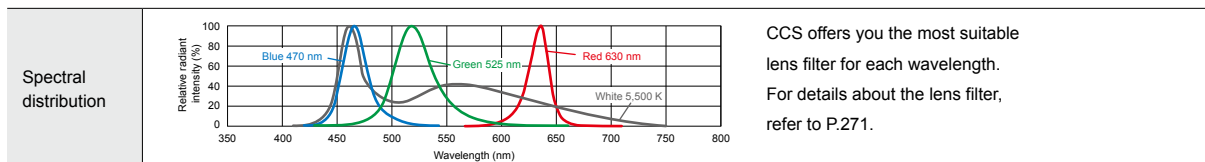
Control Unit Selection Guide ► P.229

List of Control Unit Specifications ► P.231

*1 For information on the combination of Light Units and POD-series Control Unit, please refer to our website. <http://www.ccs-grp.com/lnqr/qk/rod>

*2 The cables with a model name that ends with "-ME7" or "-EL2" are not included.

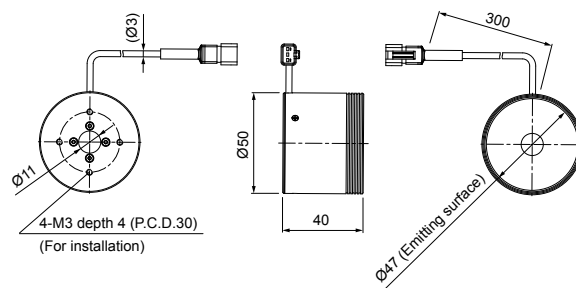
LED properties



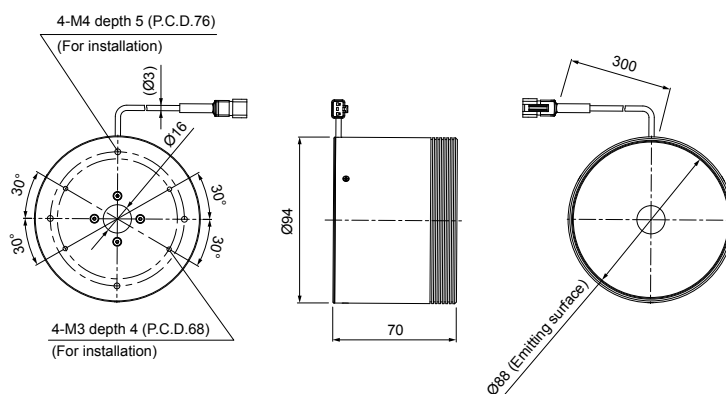
Be sure to read the "Instruction Guide" included with the product before use and follow the safety precautions upon use. The data included is for reference only. Actual values may vary.

Dimensions (mm)

LDM2-50RD2/SW2/BL2/GR2



LDM2-90RD2/SW2/BL2/GR2



You can change the connectors of the Light Unit cable. Choose between M12 connectors and flying leads. Refer to P.5 for details.

You can inquire using
our website.

Requests for
Light Unit
Selection

Requests for
Loan
Products

Requests for
Estimates

Requests for
a Catalog

Product
Inquiries

Other
Inquiries

Inquire on our website here.
<http://www.ccs-grp.com/contact/>

Direct Lighting	LDR2
	LDR2-LA
	LDR-LA1
	SQR
Diffused Lighting	SQR-TP
	HPR2
	LFR
	LKR
Direct Lighting	FPR
	FPQ2
	LDL2
	LDLB
Diffused Lighting	HLDL2
	HL
	TH2 (5 types)
	TH
Diffused Lighting	LFL
	HPD2
	LDM2
	LAV
Diffused Lighting	PDM
	LFX3
	LFX3-PT
	LFX2
Diffused Lighting	LFV3
	MSU
	MFU
	PF
Strobe Lighting	HLDR-IP/ IQ/HSL-PCL
	UV2
	UV
	LNSP-UV-FN
Water-proof Lighting	IR2
	IU
	HLV2
	LV
Ultraviolet Lighting	LSP
	HFS/HFR
	HLV2-NR
	HLV2-3M-RGB-3W
Infrared Lighting	PFBR
	PFB2
	LNL2
	LNSP2
Intensity Control	LNSP
	Coaxial Units
	LNSP-FN
	LN/LN-HK
Spot Lighting, Etc.	LNSD
	LND2
	HLND
	LT
Convergent Lighting	LNV/HLDN
	LNDG
	LNIS
	LNIS-FN
Diffused Lighting	Telecentric Lens
	Macro Lens